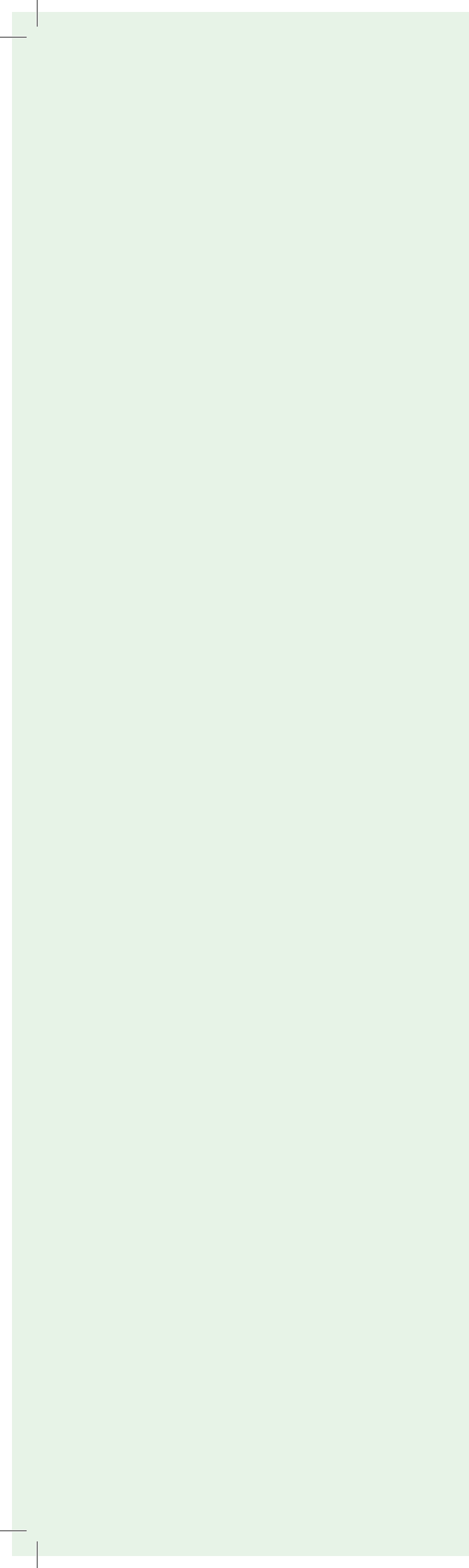


2025

Greenhouse Gas Emissions Report





Index

1.	The commitment of FCC Construcción	4
2.	Organisational boundaries, operational boundaries and exclusions	9
	2.1. Organisational boundaries	9
	2.2. Reporting Limits	10
3.	Uncertainty and maximum relative importance	14
4.	Quantification of emissions	15
5.	Base year	27
6.	Quantification methodologies	29
	Declaration of conformity of AENOR	32

1

The commitment of FCC Construcción

FCC Construcción is the FCC Group's benchmark construction company. With a **presence in more than 25 countries** and a **track record of more than 125 years**, it stands out for its solid experience in the **design and execution of civil, industrial and building infrastructures**, both residential and non-residential, as well as for the provision of a wide and diversified range of services, which positions it as one of the major references in the construction sector on an international scale.

Likewise, the corporate structure of FCC Construcción is made up of a set of subsidiary companies dedicated to the industrial and energy sectors and other related activities such as infrastructure maintenance, prefabricated production, corporate image, facility maintenance and energy efficiency, among others.

The year 2025 has been characterised by **sustained growth in production** compared to previous years, as well as by the **awarding of a high volume of projects** throughout the territory and **intense activity in works**, both nationally and **internationally**. This situation is directly reflected in the emissions data included in this report due to the increase in energy, materials and water consumption, and the generation of waste, among others.

Gouvaes Dam – Portugal



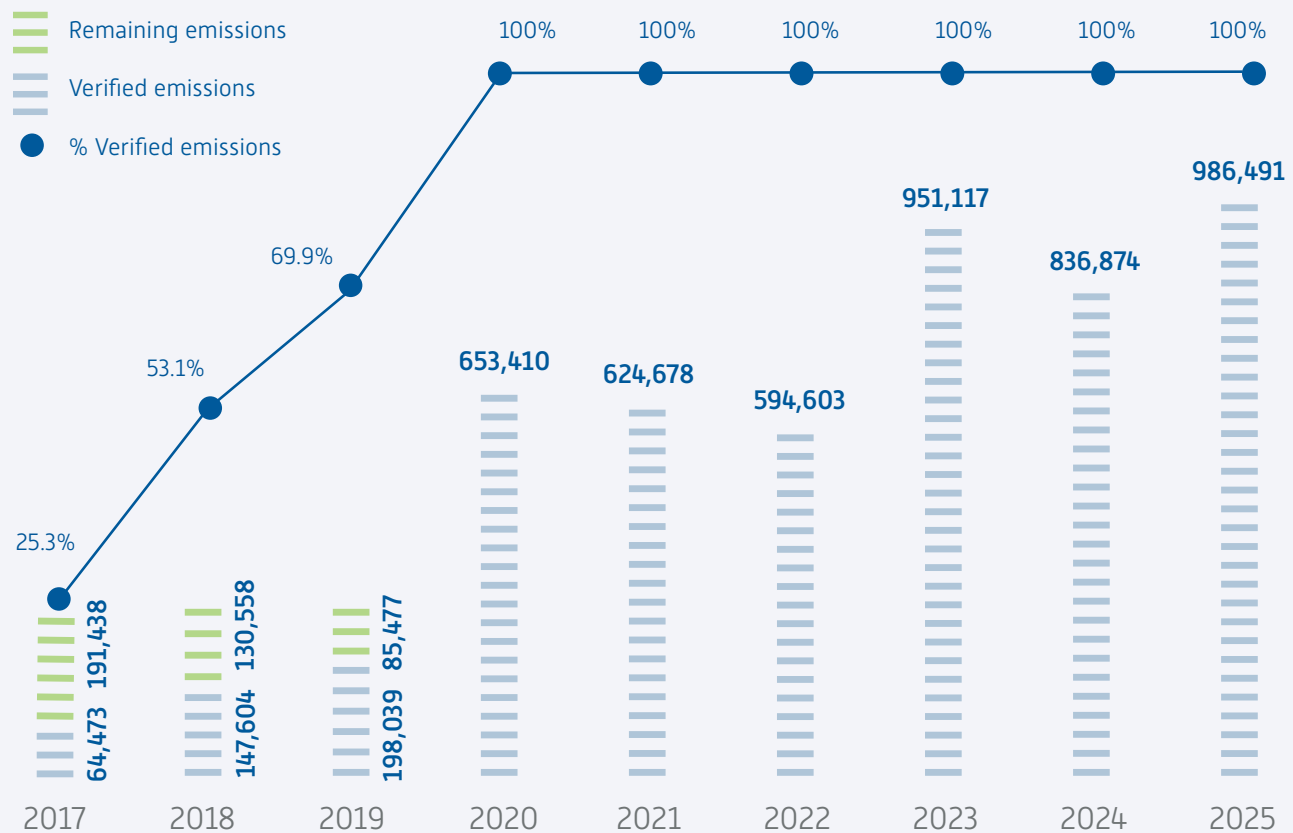
However, it should be pointed out that the very nature of the construction sector and, in particular, of FCC Construcción's activity, is characterised by a **high degree of diversity**. The annual volume of work, the type of projects, their degree of progress and the main work units that make them up make up a very changing scenario that **makes it difficult to compare between years**, including the definition of ratios, and therefore conditions the measurement of the effort or the definition of reduction targets.

However, although the effort in terms of total emissions reduction is not directly comparable to the previous year, the year 2025 has been particularly significant for the organisation in its commitment to the fight against climate change. Throughout the year, the effort to mitigate the Carbon Footprint has been intensified through the deployment of various lines of action, focused on **training and internal awareness**, the **promotion of the use of renewable energies and more sustainable materials**, the **recovery of waste, participation in R&D&I projects**, as well as the **reinforcement of transparency, control and quality of data, reporting and dissemination** of sustainability information.

It should be noted that, during this year, the **methodology for calculating FCC Construcción's emissions has been refined** in order to reflect more accurately and realistically the good practices for mitigating the Carbon Footprint carried out in the works, and to penalise, in terms of increased emissions, those actions that are not sustainable. For example, the calculation of emissions associated with the production of materials and waste management has been modified so that the acquisition of secondary materials, or materials with a certain recycled content in their composition, as well as improvements in waste management, are positively valued.

In line with the above, FCC Construcción continues to make progress in its commitment to obtain **"Zero Waste" certification** for all its projects and, during the current financial year, one more project, **UTE Benissa**, has been certified, **reaching a recovery percentage of 99.999%**, which shows that practically all the waste generated has been recycled.

GHG emissions 2024 emitted and verified (tCO₂e)





Sotra Bridge – Norway

Likewise, one of the fundamental actions developed this year was the definition of an **Internal Control System for Sustainability Information (SCIISS)**, whose current scope covers all the environmental indicators taken into account for the calculation of emissions, in order to reinforce their control. In addition, this year, reviews of the data provided by the worksites have been intensified, increasing their objectivity and transparency.

The report continues to be a key tool for dissemination and awareness-raising for the company, which is why, for the second year running, FCC Construcción has once again participated independently in the **Carbon Disclosure Project (CDP)**, an environmental information reporting standard recognised worldwide for its transparency and rigour, achieving *Management Category (B)*, in recognition of the solidity of its governance in the management of the fight against climate change.

In line with this commitment, this year the **FCC Construcción Carbon Footprint Calculation** course was once again given open to all company employees, following the success of previous versions, and for the second year running the company obtained the "**Calculate, Reduce and Offset**" seal in the *MITERD Carbon Footprint, Offset and CO₂ Absorption Projects Register* for its Greenhouse Gas (GHG) emissions for the 2024 financial year.

Finally, FCC Construcción has once again offset part of its emissions through the "TIERRA DE SAHAGÚN" absorption project, located in the Sahagún region in the southeast of the province of León, reinforcing its commitment to the conservation of biodiversity in an area of high environmental value. And, as a **great novelty** this year, FCC Construcción has achieved **neutrality in its Scope 2 indirect emissions in Europe**, by acquiring energy with a **Guarantee of Origin** in all its works and fixed centres, on the way to achieving one of the key objectives of its **2023–2026 Sustainability Strategy**.

In short, the milestones achieved reflect FCC Construcción's firm commitment to the integration of its **sustainability values in its activity as a whole, demonstrating that sustainability is not a question of measuring and reporting, but of acting responsibly, coherently and ambitiously to generate a positive and lasting impact.**

This Emissions Report therefore reflects FCC Construcción's commitment to transparency in the **2025 financial year**, presenting its Carbon Footprint calculated in accordance with the **ISO 14064:2018 Standard** and **GHG Protocol**, verified externally, and covering 100% of the countries in which the company operates.

Committed to Carbon Footprint calculation

The calculation of FCC Construcción's exhaustive Carbon Footprint is the result of many years of work and improvement. As early as 1998, the company implemented and certified its Integrated Quality and Environmental Management System in accordance with the ISO 14001 Standard, which significantly helped the company to improve control over its environmental aspects.

In 2010, FCC Construcción began to integrate the concept of climate change into its organisation by creating and implementing a new protocol for quantifying Greenhouse Gas Emissions in the construction sector. Thus, it became the **first Spanish company in the sector to externally verify its emissions** through AENOR. Since then, the company has been drawing up and verifying its Greenhouse Gas Emissions report annually, as well as extending its Scope 3 and its geographical limits to cover its entire area of action.

In this line, FCC Construcción continues to advance progressively and is not only committed to verifying its Carbon Footprint at the organisational level, but also extends this

commitment to the project level. Examples of this dedication are the projects carried out in Norway and the Netherlands.

From all its areas of activity, FCC Construcción is committed to the fight against climate change and the transition to a low-carbon economy. The company has constantly demonstrated its awareness and transparency by registering its carbon footprint in the registers of different countries since its foundation. In particular, in Spain, FCC Construcción has registered its carbon footprint with the Ministry for Ecological Transition and the Demographic Challenge (MITECO) since 2015, obtaining its seal throughout all these years.

This seal recognises FCC Construcción's involvement and capacity to quantify and verify its Greenhouse Gas Emissions and, for the second year running, it has obtained the **"Calculate, Reduce and Offset"** label for the partial offsetting of the footprint for the 2024 financial year.



Rehabilitation of San Pablo CEU University, Valencia – Spain



The company also pledged to reduce its emissions on the "**Community #ForClimate**" platform, which it joined in 2016 following the Paris Agreement.

Similarly, since 2017, FCC Construcción has been reporting information on climate change in accordance with the recommendations of the TFCO. The TFCO report organises developments around climate change into four main blocks: "Governance", "Strategy", "Risk Management" and "Metrics and Targets". This framework helps companies to understand and quantify the risks and opportunities related to climate

change, and is the framework under which FCC Construcción has designed its Climate Change Strategy.

It should be noted that, in 2023, FCC Construcción published its ambitious roadmap towards climate neutrality, its **Climate Change Strategy 2023-2026**, approved by the Sustainability Committee. This strategy, which forms part of the company's Sustainability Strategy, establishes a clear framework of mitigation and adaptation objectives that guide FCC Construcción's climate action in the short term (2026) and also in the medium and long term (2030 and 2050).

Ruby Line, Porto Metro – Ponte Ferreira – Portugal



Characteristics of the FCC Construcción 2025 Emissions Report

This report contains the Greenhouse Gas Inventory for the year **2025** for the activities carried out at FCC Construcción's works and fixed centres located in **Spain, Portugal, Bulgaria, Romania, the United Kingdom, Ireland, Norway, the Netherlands, Nicaragua, Costa Rica, Panama, El Salvador, Mexico, Colombia, Chile, Peru, Canada, the United States, Qatar, Australia and Saudi Arabia**.

The report has been drafted in accordance with the requirements set out in UNE-EN-ISO 14064-1:2019 "*Greenhouse gases. Specification with guidance, at the level of organisations, for the quantification and reporting of greenhouse gas emissions and removals*" and in the sectoral reference of the *European Network of Construction Companies for Research and Development* (hereinafter ENCORD), in its May edition

"*Built on GHG Protocol*", which makes it the sectoral GHG guideline for construction.

Likewise, in accordance with the requirements of the UNE-ISO 14064-1:2019 Standard, in order to justify the scope of the emissions calculation and its exclusions, the **materiality analysis** has been updated, with the aim of identifying which indirect emissions are significant for the organisation and, therefore, must be included within its reporting limits.

The verification of the Greenhouse Gas Inventory has been carried out with a **limited** level of **assurance** by AENOR [see Annex].

This report is the responsibility of the **Sustainability and Innovation Director**.

2

Organisational boundaries, operational boundaries and exclusions

2.1. Organisational boundaries

FCC Construcción consolidates its Greenhouse Gas emissions under the **operational control** approach, which is the most appropriate for the nature of operations in the construction sector. In the quantification of Category 1 emissions, emissions associated with fuel consumption, and Category 2, emissions associated with electricity consumption, only those emissions over which FCC Construcción has **financial control** are considered, i.e. those deriving from consumption whose costs are assumed by FCC Construcción.

The information included in the 2025 GHG inventory corresponds to all the installations in **Spain, Portugal, Bulgaria, Romania, the United Kingdom, Ireland, Norway, the Netherlands, Nicaragua, Costa Rica, Panama, El Salvador, Mexico, Colombia, Chile, Peru, Canada, the United States, Qatar, Australia and Saudi Arabia**, understanding installations to be works and fixed centres, among which we distinguish offices, warehouses and machinery parks.

Lines 4–5–6, Riyadh Metro – Saudi Arabia



2.2. Reporting Limits

Emissions from construction sites and fixed centres are quantified within the organisational limits of FCC Construcción, considering the following categories:

Category 1: Direct GHG emissions and removals (Scope 1).

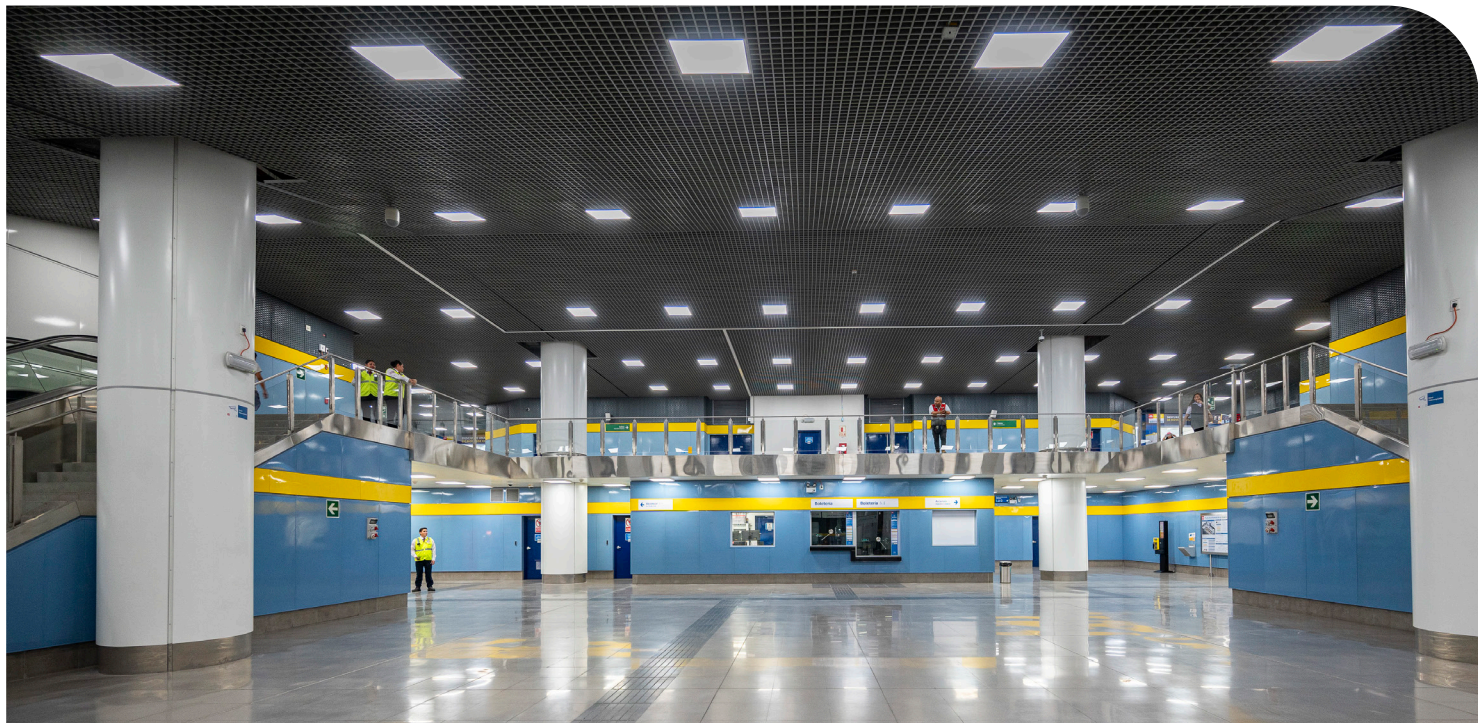
These are emissions from sources owned or controlled by the company, taking into account whether they come from **stationary combustion** (for example, direct emissions from combustion in boilers, generators and auxiliary plants) or from **mobile combustion**, for example, from the use of vehicles and machinery which use fuel invoiced to FCC Construcción.

Within this category, the organisation also differentiates between non-biogenic emissions, anthropogenic biogenic emissions and non-anthropogenic biogenic emissions (the latter are only quantified for information purposes), in accordance with Annex D of the UNE-EN ISO 14064-1:2019 Standard.

FCC Construcción also breaks down the emissions in this category into:

- » Direct emissions associated with the consumption of fuels on site.
- » Emissions associated with fuel consumption at fixed centres.

Lines 2 and 4 of Lima Metro – Peru



Category 2: Indirect GHG emissions (Scope 2)

Includes emissions from the generation of electricity purchased by FCC Construcción. Indirect electricity emissions occur at the plant where the electricity is generated.

In accordance with the UNE-EN ISO 14064:2019 Standard, indirect emissions associated with electricity must be calculated both by localised approach, taking into account the emission factor of the retailer, and by market approach, taking into account the country's energy mix factor.

FCC Construcción, due to the difficulty associated with obtaining the data from the retailer, does not calculate its emissions by localised scope. For this reason, the market approach is applied for all the countries where FCC Construcción operates and calculates the Carbon Footprint.

These emissions in turn are broken down into:

- » Emissions associated with the consumption of electrical energy on site.
- » Emissions associated with electricity consumption at fixed sites.

Category 3: Indirect GHG emissions caused by transport (Scope 3)

This category includes indirect GHG emissions due to the transport of materials used by the organisation and staff travel, both to the workplace and for business trips:

- 3.1. Emissions associated with travel by company personnel for business trips.
- 3.2. Emissions associated with company staff commuting to and from the workplace.
- 3.3. Emissions associated with the transport of materials.

Category 4: Indirect GHG emissions caused by products used by the organisation (Scope 3).

This category includes indirect GHG emissions due to products used by the organisation in addition to indirect emissions caused by other sources, e.g. production of materials consumed, waste management and transport, activities related to purchased energy, execution of subcontracted units and consumption of water from the supply network:

- 4.1. Associated with the production of materials consumed.
- 4.2. Associated with the execution of subcontracted work units.
- 4.3. Associated with activities related to energy purchased.
- 4.4. Associated with the transport and management of waste and excess materials.
- 4.5. Associated with the consumption of water from the supply network.

Emissions avoided

FCC Construcción includes in the calculation of the Carbon Footprint those emissions that are avoided:

1. By recovery of waste instead of taking it to landfill.
2. By neutralising the pH with CO₂.
3. By proper maintenance of machinery operating on site.
4. By controlling the speed of vehicles on site.
5. By self-produced electricity from renewable sources.
6. By use of sustainable materials.



Berrocales Residential Development – Madrid – Spain



Ruby Line, Porto Metro – Ponte Ferreirinha – Portugal

Informative emissions:

The organisation reports emissions of anthropogenic and non-anthropogenic biogenic origin. Anthropogenic biogenic emissions result, for example, from the combustion of biofuels used in different FCC Construcción sources, and are reported, on the one hand, as anthropogenic biogenic CO₂ here, and, on the other hand, as anthropogenic other GHGs (CH₄ and NO₂), which are reported in the category.

Materiality analysis and exclusions

FCC Construcción, in 2021, carried out a materiality analysis, with the support of an external consultant, with the ultimate aim of improving the calculation of its Carbon Footprint and checking its response to the requirements of the UNE-EN ISO 14064-1:2019 Standard, in addition to the priority categories of ENCORD, the proposed criteria of the Analysis being as follows:

- » **Magnitude of emissions:** those that are quantitatively substantial. It is established that it is significant and, therefore, necessary to include from 1%.
- » **Level of influence on sources:** the extent to which the organisation has the capacity to monitor and reduce these emissions.
- » **Access to information:** ease of obtaining the data needed for the calculation.
- » **Level of accuracy of data.**
- » **Sector-specific guidance:** those emissions that are considered significant based on the guidance of a business sector.

Based on the priority categories defined by ENCORD, FCC Construcción has already identified the following: *ferrous metals* (e.g. structural and reinforcing steel); *non-ferrous metals* (e.g. aluminium cladding); *cement* (used in concrete and concrete products); *brick* (ceramics produced by firing in a kiln); *glass*; and *bituminous products* (e.g. asphalt). Of these materials, only two categories were not identified, not accounted for before 2021, and which are considered a priority by the study: *insulation* (from non-renewable materials) and *gypsum-based products* (used in gypsum panels).

The materiality study analysed the relative impact of these two materials, in order to identify whether their contribution was significant or negligible, calculating their total contribution in terms of quantity of materials and emission factors, and following this analysis, it was determined that it was necessary to include only the emissions associated with insulation, as it was considered significant for the activity, and so from 2021 **insulation** is included in the Carbon Footprint calculation.

In addition, based on the resulting emissions, **the quantification of fugitive emissions** from the air conditioning equipment over which it has control were excluded from FCC Construcción's Carbon Footprint, as they are not very representative (**less than 0.25%**) of the total emissions emitted by the company.

This **materiality analysis** is updated annually in order to identify possible significant changes to be considered in the scope of the emissions calculation. During 2025, large prefabricated elements have been added as they are an important material in the works and wood to homogenise data with those required for the Water Footprint.

This update also included an assessment of the impact of emissions associated with overnight stays of employees during business trips to see if it was relevant to include them. The analysis concluded that these emissions are not significant (< 1% of the total), so it was decided to keep them outside the scope of the emissions calculation.



A9 Motorway Widening – Netherlands

3

Uncertainty and maximum relative importance

The estimated uncertainty of the emissions is a combination of the uncertainty of the emission factors and the uncertainty of the activity data, estimated at **7.9%**.

The emission factors used to carry out the FCC Construcción Greenhouse Gas Inventory come from official sources and are specific for each category of emission source. These emission factors are selected with a view to minimising uncertainty as far as possible. Unless there is clear evidence to the contrary, it is assumed that the probability density functions are normal and, therefore, that the uncertainty of the emission factors is low.

The activity data used are from invoicing data, delivery notes, measurements and construction project data. Based on the supplementary guidance on uncertainty assessment ("*Guidance on uncertainty assessment in GHG inventories and calculating statistical parameter uncertainty*"), developed by the ECCR of the GHG Protocol, we can consider that the origin of FCC Construcción's activity data guarantees the maximum achievable certainty for the different sources of GHG emissions.

A maximum relative importance level of **5%** of the total declared emissions of greenhouse gases has been established.

Ermida Dam – Portugal



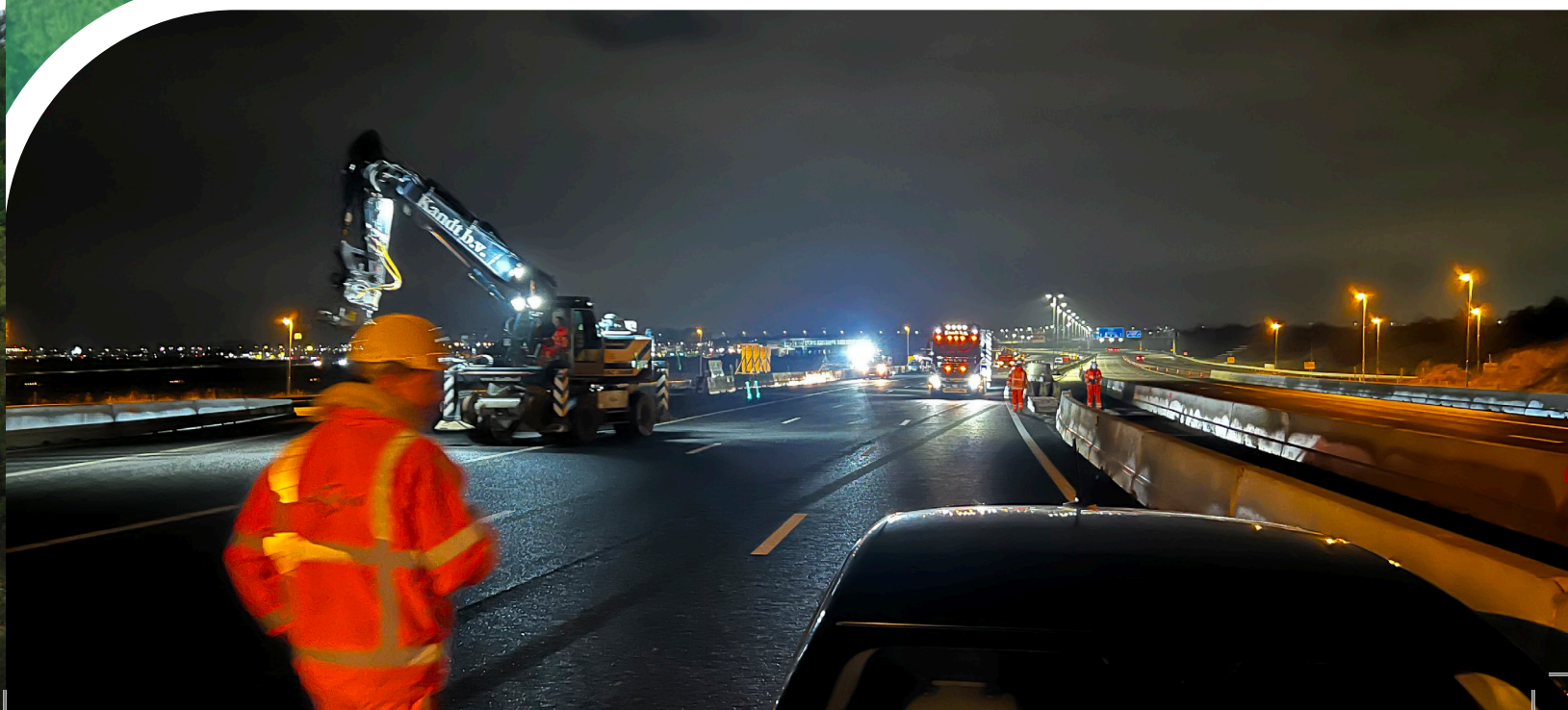
4

Quantification of emissions

This section presents the quantification of FCC Construcción's Greenhouse Gas emissions in 2025, specifying the GHG emissions from **Spain, Portugal, Bulgaria, Romania, the United Kingdom, Ireland, Norway, the Netherlands, Nicaragua, Costa Rica, Panama, El Salvador, Mexico, Colombia, Chile, Peru, Canada, the United States, Qatar, Australia and Saudi Arabia.**

Firstly, the emissions are classified by scopes and categories, as defined in the UNE EN-ISO 14064:2019 standard.

Motorway Widening – Netherlands



Emissions, classified by Scopes (according to UNE-ISO 14064-1:2006) t CO ₂ e	Area I		Area II		
	t CO ₂ e - SPAIN	t CO ₂ e - PORTUGAL	t CO ₂ e - BULGARIA	t CO ₂ e - ROMANIA	t CO ₂ e - UNITED KINGDOM
Scope 1: Direct GHG emissions	13,865.29	2,716.60	0.00	9,452.76	284.67
Associated to fuel consumption in stationary sources	7,782.94	37.28	0.00	1,059.13	126.00
Associated with fuel consumption in mobile sources	6,082.5	2,679.32	0.00	8,393.63	158.67
Other anthropogenic biogenic emissions	0.00	0.00	0.00	0.00	0.00
Scope 2: Indirect GHG emissions	0.00	0.00	0.00	0.00	0.00
Localised approach	538.32	21.76	2.81	308.76	167.61
Market focus	0.00	0.00	0.00	0.00	0.00
Scope 3: Other indirect emissions	360,094.25	60,792.80	0.17	117,829.51	2,571.58
Category 3: Indirect GHG emissions caused by transport	36,706.70	10,925.17	0.00	56,353.48	823.43
Associated with company staff travelling on business trips	260.07	0.00	0.00	7.90	3.63
Associated with commuting to the workplace	2,653.71	834.01	0.00	487.80	42.68
Associated with the transport of consumed materials	33,792.92	10,091.16	0.00	55,857.78	777.12
Category 4: indirect emissions caused by products used by the organization	323,387.55	49,867.63	0.17	61,476.03	1,748.15
Associated with the production of consumed materials	296,290.89	46,988.30	0.00	55,347.79	1,587.53
Associated with the execution of subcontracted work units	17,882.16	2,088.94	0.00	3,587.16	54.49
Associated with energy-related activities acquired	3,442.84	635.96	0.17	2,260.18	105.64
Associated with the transport and management of waste and surplus materials	5,735.65	152.18	0.00	280.26	0.49
Associated with consumption of water from the supply network	36.01	2.25	0.00	0.64	0.00
Total Emissions 2025	373,959.54	63,509.40	0.17	127,282.27	2,856.25

Area II		
t CO ₂ e - IRELAND	t CO ₂ e - NORWAY	t CO ₂ e - NETHERLANDS
0.00	1,948.73	1,983.16
0.00	0.00	1,869.66
0.00	1,948.73	113.50
0.00	0.00	0.00
0.00	0.00	0.00
0.00	3,723.72	630.05
0.00	0.00	0.00
1.16	25,213.14	105,922.84
1.16	905.61	4,505.79
0.00	3.17	49.48
1.16	29.91	14.32
0.00	872.53	4,441.99
0.00	24,307.53	101,417.05
0.00	19,978.54	99,464.64
0.00	2,773.89	1,442.66
0.00	685.57	505.65
0.00	815.77	3.89
0.00	53.76	0.21
1.16	27,161.87	107,906.00



Renovation and Extension of Soria Hospital – Spain

Emissions, classified by Scopes (according to UNE-ISO 14064-1:2006) t CO ₂ e	Area III					
	t CO ₂ e - NICARAGUA	t CO ₂ e - COSTA RICA	t CO ₂ e - PANAMA	t CO ₂ e - ELSALVADOR	t CO ₂ e - MEXICO	t CO ₂ e - COLOMBIA
Scope 1: Direct GHG emissions	44.73	1.81	71.31	1.98	8.57	1.24
Associated to fuel consumption in stationary sources	0.40	0.00	14.60	0.00	0.00	0.00
Associated with fuel consumption in mobile sources	44.33	1.81	56.71	1.98	8.57	1.24
Other anthropogenic biogenic emissions	0.00	0.00	0.00	0.00	0.00	0.00
Scope 2: Indirect GHG emissions	10.84	1.57	60.96	0.45	4.36	3.10
Localised approach	10.84	1.57	60.96	0.45	4.36	3.10
Market focus	10.84	1.57	60.96	0.45	4.36	3.10
Scope 3: Other indirect emissions	106.50	2.75	58.75	2.74	29.48	16.76
Category 3: Indirect GHG emissions caused by transport	93.28	2.12	35.97	2.12	26.69	16.20
Associated with company staff travelling on business trips	0.00	0.00	11.71	0.00	9.80	7.14
Associated with commuting to the workplace	93.28	2.12	24.27	2.12	16.89	9.06
Associated with the transport of consumed materials	0.00	0.00	0.00	0.00	0.00	0.00
Category 4: indirect emissions caused by products used by the organization	13.22	0.63	22.78	0.62	2.79	0.56
Associated with the production of consumed materials	0.00	0.00	0.00	0.00	0.00	0.00
Associated with the execution of subcontracted work units	0.00	0.00	0.00	0.00	0.00	0.00
Associated with energy-related activities acquired	11.81	0.63	21.55	0.61	2.78	0.55
Associated with the transport and management of waste and surplus materials	1.34	0.00	1.23	0.01	0.01	0.00
Associated with consumption of water from the supply network	0.07	0.00	0.00	0.00	0.00	0.01
Total Emissions 2025	162.07	6.13	191.02	5.17	42.41	21.10

Area III				Area IV			
t CO ₂ e - CHILE	t CO ₂ e - PERU	t CO ₂ e - USA	t CO ₂ e - CANADA	t CO ₂ e - QATAR	t CO ₂ e - AUSTRALIA	t CO ₂ e - SAUDI ARABIA	t CO ₂ e - TOTALES FCC CO
698.32	4,608.67	0.00	0.00	0.00	129.35	0.00	35,817.19
291.17	3,339.55	0.00	0.00	0.00	101.64	0.00	14,622.37
407.15	1,269.12	0.00	0.00	0.00	27.71	0.00	21,194.82
0.00	0.00	0.00	0.00	0.00	0.00	0.00	0.00
24.19	4,798.69	8.94	7.01	0.00	45.56	0.00	4,965.67
24.19	4,798.69	8.94	7.01	0.00	45.56	0.00	10,358.70
24.19	4,798.69	8.94	7.01	0.00	45.56	0.00	4,965.67
7,429.11	245,439.31	120.07	546.15	24.32	19,149.55	357.28	945,708.22
796.63	2,909.68	119.50	544.99	24.32	2,563.91	357.28	117,714.03
46.67	56.10	119.50	160.19	0.00	108.55	4.18	848.08
24.13	9.20	0.00	384.79	24.32	22.58	353.10	5,029.45
725.83	2,844.39	0.00	0.00	0.00	2,432.78		111,836.50
6,632.48	242,529.63	0.57	1.16	0.00	16,585.64	0.00	827,994.19
6,150.94	236,489.91	0.00	0.00	0.00	16,130.06	0.00	778,428.60
194.79	2,168.96	0.00	0.00	0.00	76.2	0.00	30,269.25
158.83	1,613.04	0.55	1.16	0.00	38.25	0.00	9,485.77
127.71	2,208.28	0.00	0.00	0.00	341.03	0.00	9,667.85
0.21	49.44	0.02	0.00	0.00	0.1	0.00	142.72
8,151.62	254,846.67	129.01	553.16	24.32	19,324.46	357.28	986,491.08

Emissions, classified by Emission Blocks (according to ENCORD referential)	Area I		Area II					
	SPAIN	PORTUGAL	BULGARIA	ROMANIA	UNITED KINGDOM	IRELAND	NORWAY	THE NETHERLANDS
1. Fuels (works)	13,113.42	2,578.68	-	8,885.15	158.67	-	1,948.73	1,983.16
2. Fuels (fixed sites)	751.87	137.92	-	567.61	126.00	-	-	-
3. Fugitive and process emissions	-	-	-	-	-	-	-	-
4. Electrical energy (work)	383.50	16.48	-	250.38	1.68	-	3,723.72	630.05
5. Electrical energy (fixed centres)	154.82	5.28	2.81	58.38	165.93	-	-	-
6. Heat	-	-	-	-	-	-	-	-
7. Vehicle fuels	2,720.06	823.41	-	490.06	42.68	1.16	0.10	4.42
8. Public transport	84.28	10.59	-	-	0.03	-	29.90	14.32
9. Subcontractors	17,882.16	2,088.94	-	3,587.16	54.49	-	2,773.89	1,442.66
10. Waste	5,735.65	152.18	-	280.26	0.49	-	815.77	3,89
11. Materials	330,083.81	57,079.46	-	111,205.57	2,364.65	-	20,851.07	103,906.63
Total	370,909.57	62,892.94	2,81	125,324.57	2,914.62	1.16	30,143.18	107,985.13

Pape Tunnelling and Underground Stations (PTUS) – Canada



Area III													Area IV		t CO2e - TOTAL FCC CO
NICARAGUA	COSTA RICA	PANAMA	EL SALVADOR	MEXICO	COLOMBIA	CHILE	PERU	UNITED STATES	CANADA	QATAR	AUSTRALIA	SAUDI ARABIA			
-	-	-	-	-	-	684.69	4,592.72	-	-	-	129.35	-	34,074.57		
44.73	1.81	71.31	1.98	8.57	1.24	13.63	15.95	-	-	-	-	-	1,742.62		
-	-	-	-	-	-	-	-	-	-	-	-	-	0.00		
-	-	-	-	-	-	21.45	4,796.10	-	-	-	29.81	-	9,853.17		
10.84	1.57	60.96	0.45	4.36	3.10	2.74	2.59	8.94	18.92	-	15.75	-	517.44		
-	-	-	-	-	-	-	-	-	-	-	-	-	0.00		
93.28	2.12	24.27	2.12	15.74	9.06	19.54	7.37	-	343.43	24.32	17.80	228.22	4,869.17		
-	-	0.03	-	1.16	-	4.71	1.83	-	41.86	-	5.29	127.06	321.0475		
-	-	-	-	-	-	194.79	2,168.96	-	-	-	76.20	-	30,269.2500		
134	-	1.23	0.01	0.01	-	127.71	2,208.28	-	-	-	341.03	-	9,667.85		
-	-	-	-	-	-	6,876.77	239,334.30	-	-	-	18,562.84	-	890,265.10		
150.19	5.50	157.80	4.56	29.84	13.40	7,946.03	253,128.10	8.94	404.20	24.32	19,178.07	355.28	981,580.22		



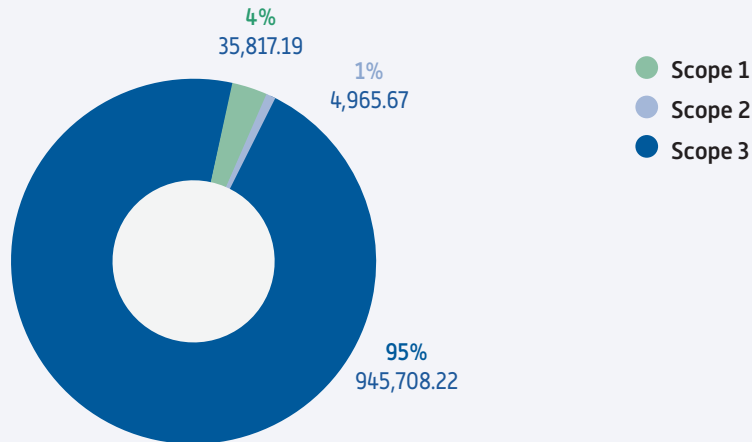


Rail Accesses to La Sagrera Station – Spain

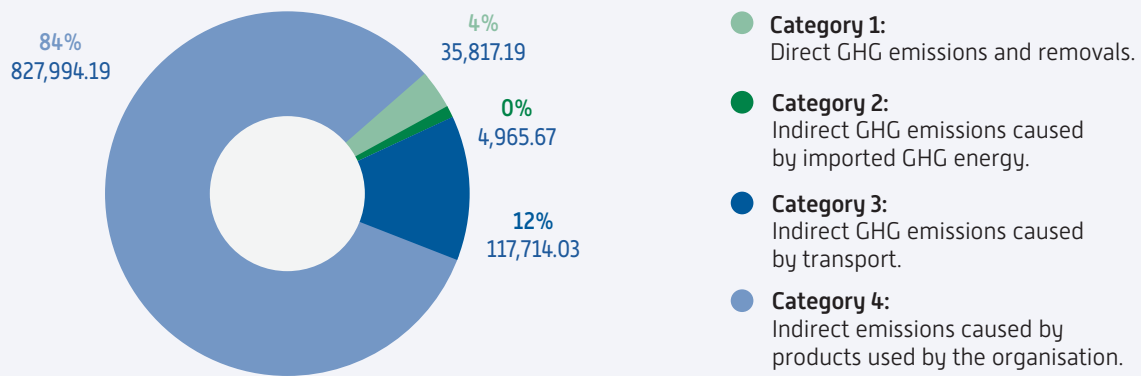
Category 1/ Scope 1 emissions: Classified by GHG type (t CO₂eq 2025)

ORGANISATION	CO ₂	CH ₄	N ₂ O	Total GHG
Spain	13,742.76	23.55	98.98	13,865.29
Portugal	2,707.55	3.06	6.00	2,716.61
Bulgaria	0.00	0.00	0.00	0.00
Romania	9,337.32	3.07	112.38	9,452.77
United Kingdom	282.37	0.21	2.09	284.67
Ireland	0.00	0.00	0.00	0.00
Norway	1,924.32	0.23	24.18	1,948.73
Netherlands (Holland)	1,959.14	0.62	23.40	1,983.16
Nicaragua	44.20	0.04	0.49	44.73
Costa Rica	1.80	0.00	0.00	1.80
Panama	70.48	0.07	0.78	71.33
El Salvador	1.97	0.01	0.01	1.99
Mexico	8.51	0.03	0.03	8.57
Colombia	1.23	0.00	0.00	1.23
Chile	686.69	1.41	10.22	698.32
Peru	4,593.20	5.22	10.24	4,608.66
Canada	0.00	0.00	0.00	0.00
Qatar	0.00	0.00	0.00	0.00
USA	0.00	0.00	0.00	0.00
Australia	128.73	0.13	0.50	129.36
Saudi Arabia	0.00	0.00	0.00	0.00
TOTAL FCC CO	35,490.27	37.65	289.30	35,817.22

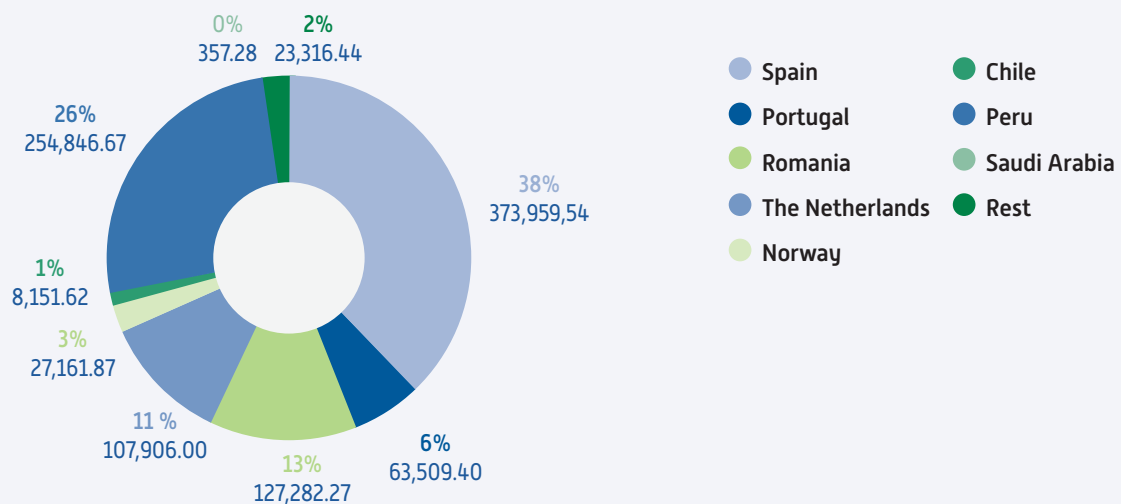
GHG emissions by scope (tCO₂eq)



Emissions classified by category (tCO₂eq)

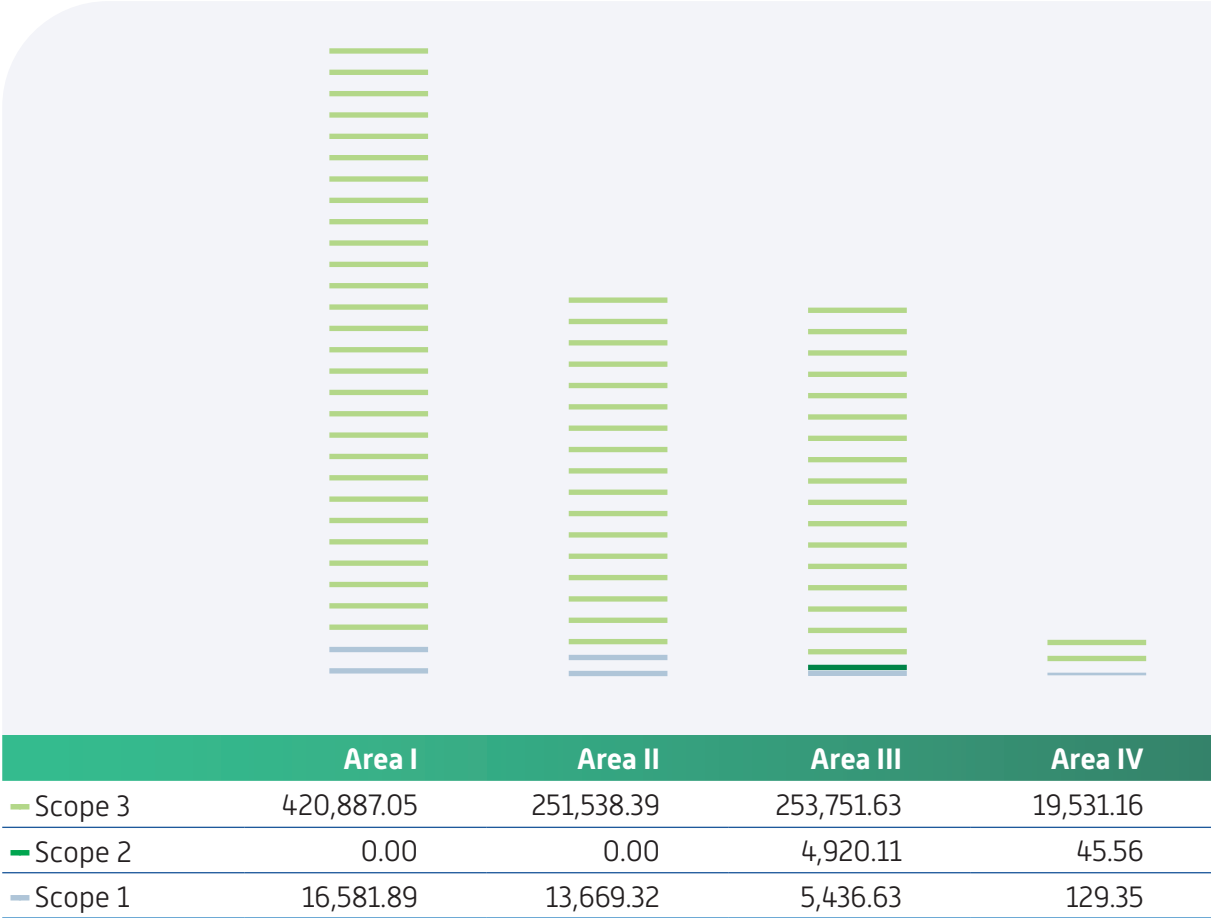


GHG emissions 2025 by country (tCO₂eq)



* Under the heading "Rest" are issues from Bulgaria, United Kingdom, Ireland, Norway, Nicaragua, Costa Rica, Panama, El Salvador, Mexico, Colombia, Canada, United States, Australia and Qatar.

GHG emissions 2025 by Scope and Area (tCO₂eq)

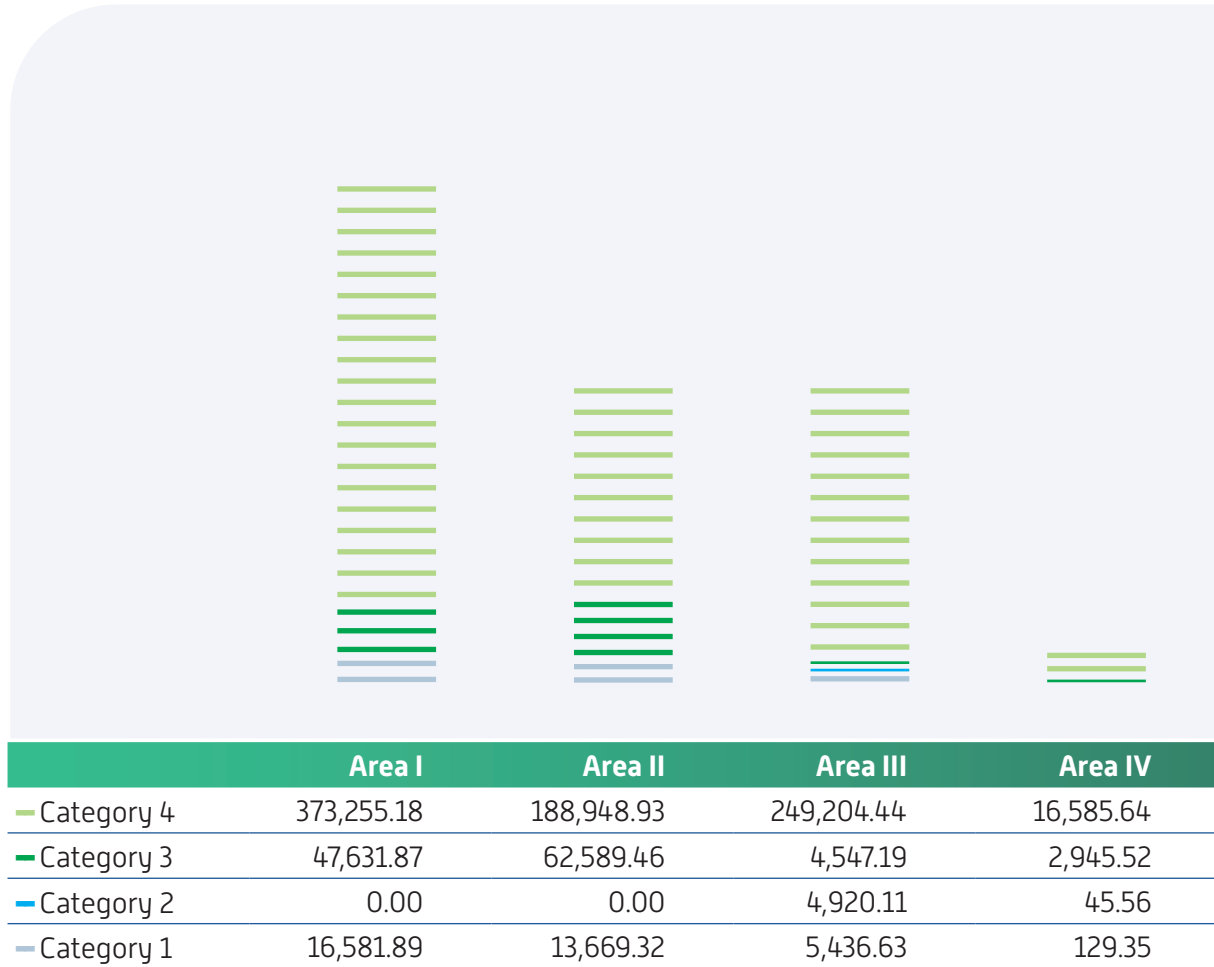


*Area I: Spain and Portugal. Area II: Europe. Area II: America. Area IV: Middle East and Oceania.

New Ruby Line Metro Station, Porto – Portugal



GHG emissions 2025 by Category and Area (tCO₂eq)



*Area I: Spain and Portugal. Area II: Europe. Area III: America. Area IV: Middle East and Oceania.



Avoided emissions

This section presents the quantification of the Greenhouse Gas emissions avoided in the 21 countries, due to the implementation of good practices on site. It details the emissions

that are no longer emitted by carrying out the following targeted actions, according to the terminology used in the UNE-ISO 14064:2019 standard:

Avoided Emissions	t CO ₂ e 2025						TOTAL EMISSIONS
	By waste valorisation instead of landfilling	By pH neutralisation with CO ₂	By proper maintenance of machinery operating on site	By speed control of vehicles on site	Self-produced electricity from renewable sources	By use of sustainable materials	
Spain	102,517.24	1.80	456.97	10.69	8.35	27,831.29	130,826.34
Portugal	2,280.45	0.00	121.20	0.00	0.00	22,203.58	24,605.23
Bulgaria	0.00	0.00	0.00	0.00	0.00	0.00	0.00
Romania	91.91	0.00	467.63	0.00	0.00	0.00	559.54
United Kingdom	12.44	0.00	0.00	0.00	0.00	0.00	12,44
Ireland	0.00	0.00	0.00	0.00	0.00	0.00	0.00
Norway	1,016.96	0.00	102.56	0.00	0.00	8,794.96	9,914.48
The Netherlands	467.50	0.00	102.79	0.00	0.00	394.26	964.55
Nicaragua	0.00	0.00	2.35	0.00	0.00	0.00	2.35
Costa Rica	0.06	0.00	0.00	0.00	0.00	0.00	0.06
Panama	0.00	0.00	3.15	0.00	0.00	0.00	3.15
El Salvador	0.00	0.00	0.00	0.00	0.00	0.00	0.00
Mexico	0,99	0.00	0.00	0.00	0.00	0.00	0.99
Colombia	0.00	0.00	0.00	0.00	0.00	0.00	0.00
Chile	0.00	0.00	36.04	0.00	0.00	0.00	36.04
Peru	26,078.28	0.00	241.72	0.00	0.00	0.00	26,320.00
United States	0.00	0.00	0.00	0.00	0.00	0.00	0.00
Canada	0.00	0.00	0.00	0.00	0.00	0.00	0.00
Qatar	0.00	0.00	0.00	0.00	0.00	0.00	0.00
Saudi Arabia	0.00	0.00	0.00	0.00	0.00	0.00	0.00
Australia	63.65	0.00	0.00	0.00	9.93	3.58	77.16
TOTAL FCC CO	132,529.48	1.80	1,534.41	10.69	18.28	59,227.67	193,322.33

5

Base year

In 2026, FCC Construcción updated its base year for calculating emissions from 2021 to 2025. This change responds to a significant evolution in both the scope and the methodology used, allowing it to reflect the company's real performance more faithfully. The main improvements introduced are as follows:

- » *Updated geographic scope:* the Carbon Footprint is increased from 22 to 21 countries, after excluding Belgium as no activity was recorded during 2025.
- » *Renewed methodology for business travel:* CO2 emissions provided by the Travel Agency, calculated using consolidated and validated methodologies, are directly integrated, provided they use the most up-to-date emission factor.
- » *More complete calculation of emissions associated with the production of materials:* two new materials are added, wood and large prefabricated materials, and the possibility of differentiating between primary, secondary or recycled content incorporated materials is introduced.
- » *Update of the calculation of emissions from subcontracted units:* a new category related to the placement of large prefabricated elements is added.
- » *Review and improvement of the calculation of waste and leftover materials:* the methodology is improved to adjust it more closely to the operational reality and new types of waste are incorporated.

A465 Highway Widening – United Kingdom



- » *Update of the indicator of emissions avoided by reuse of materials:* the concept is redefined and the associated methodology is updated, reinforcing its technical rigour and improving the objectivity of the calculation.
- » *New emissions avoided by use of sustainable materials:* the emissions avoided by choosing materials with

less environmental impact are quantified, reinforcing FCC Construcción's commitment to more responsible building solutions.

- » *Review of the criteria for selecting emission factors:* these are updated to ensure greater coherence and alignment with reference methodological standards.

42 Dwellings, Arroyofresno – Spain



6

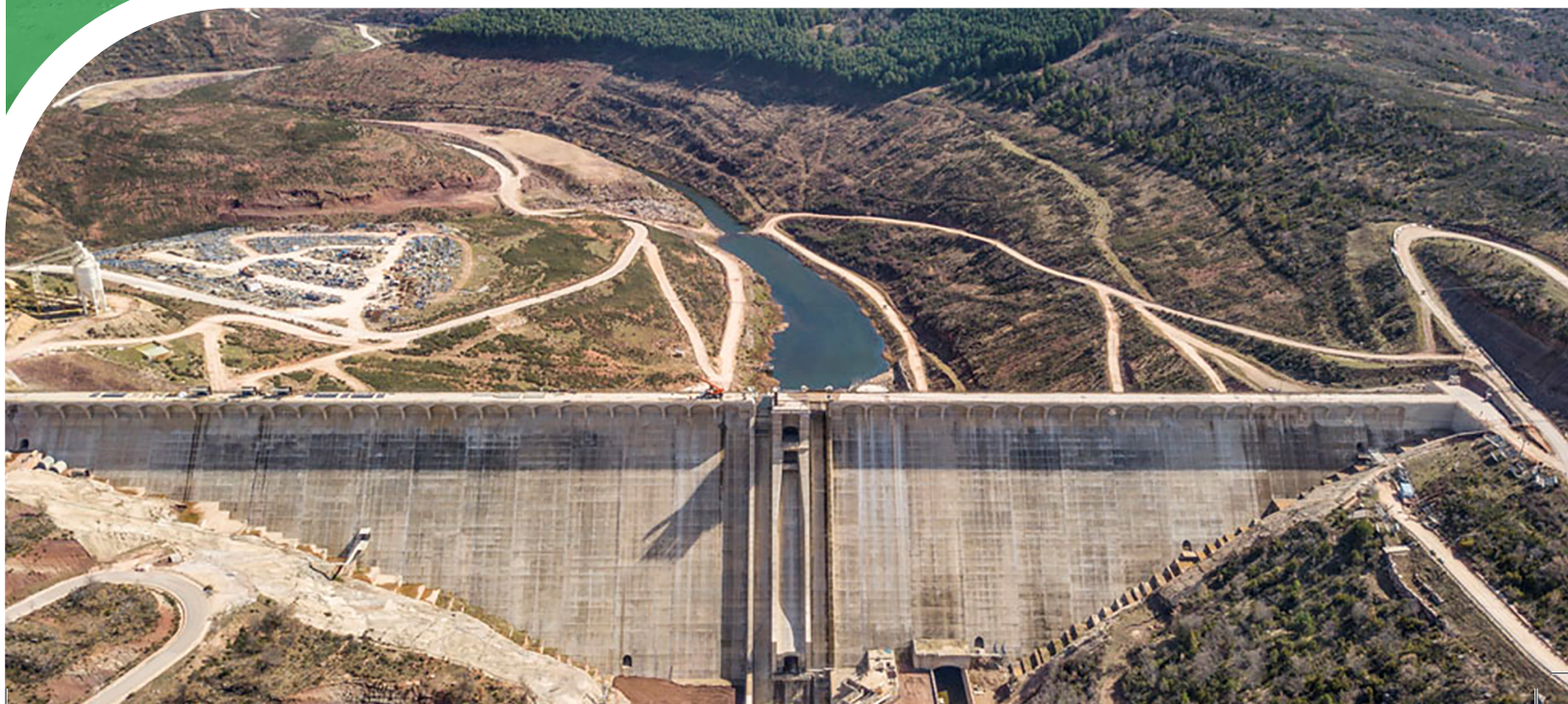
Quantification methodologies

FCC Construcción determines its Greenhouse Gas emissions by calculation, multiplying the activity data collected at each site or fixed centre by the documented GHG emission factors, which are selected and periodically updated centrally.

FCC Construcción uses a centralised approach, integrating the activity data received from each of the sites and fixed centres and quantifying the GHG emissions at corporate level, although the information can be discretised by site, management, region, country, type of client, type of site, etc.

The emission factors used in FCC Construcción's Greenhouse Gas Inventory for **2025** come exclusively from official sources, internationally recognised methodologies and reference databases for the construction sector. Each category incorporates the latest version available at the time the inventory is closed, guaranteeing the traceability and methodological consistency of the calculation.

Castrovido Dam – Spain





Sotra Bridge – Norway

Intergovernmental Panel on Climate Change (IPCC)

Global Warming Potential (GWP) factors from the Sixth Assessment Report (AR6), Working Group I, Chapter 7, are used for CH₂ and N₂O. Also, for biogenic emissions from biofuels the factors from IPCC 2006 - *Guidelines for National Greenhouse Gas Inventories, Chapter 2 (Stationary Combustion)* are used.

Ministry for Ecological Transition and Demographic Challenge (MITERD), Spain

Emission factors from the "Carbon Footprint Calculator - Version 31" are used, including fossil fuels, biofuels, vehicles and machinery, as well as energy parameters (PCI, densities and energy conversion).

Department for Environment, Food & Rural Affairs (DEFRA), United Kingdom

Main source for:

- » *Fuels and biofuels use factors ("Fuels").*
- » *Energy conversion factors of the above ("Fuel properties").*
- » *Freight transport factors (road, rail, sea, air) ("Freighting goods").*
- » *Personnel transport (taxis, buses, motorbikes, private vehicles, rental), ("Business travel-land and Business travel-air").*
- » *Factors of production of fuels ("WTT - well-to-tank").*
- » *Factors of production of construction materials (concrete, steel, aggregates, glass, insulation, etc.) ("material use-construction").*
- » *Waste management and transport factors ("waste disposal").*

The tables are from DEFRA GHG Conversion Factors 2025 (Full Set)- Advanced users.

International Energy Agency (IEA)

Used for:

- » **Electricity** emission factors **at country level** (international context).
- » **Electricity transmission and distribution loss** factors, integrated in the calculation of indirect emissions.

Low Carbon Power / National Electricity Matrices (Chile and Peru)

For the electricity emission factors in Chile and Peru, the average emission values of the national electricity system published in Low Carbon Power 2024 are used, based on official data from electricity operators and energy authorities.

Ministry of the Environment (MMA), Chile – Plataforma HuellaChile

For fuels in Chile, the factors of the "HuellaChile, Carbon Management Programme", specifically the "**Database of Emission Factors 2024**", are used.

Infocarbono – Ministry of Environment (MINAM), Peru

For fuels and electricity in Peru, factors have been used from:

- » *National GHG Inventories – Energy Sector (Infocarbono).*
- » *Updated tables in the official repository of MINAM.*

Department of Climate Change, Energy, the Environment and Water. Australian Government

Fuel and biofuel conversion, use (Scope 1) and production (Scope 3) factors for Australia are from the Australian Government database: *Australian National Greenhouse Accounts Factors: For individuals and organisations estimating greenhouse gas emissions (2025).*

Electricity Emission Factor – 2025

Electricity emission factor for Portugal.

Factors associated with the production of materials

Material production factors are derived from various databases:

- » *Defra 2025 (UK Department for Environment, Food & Rural Affairs) – consolidated database with emission factors for materials and processes, updated annually.*
- » *IEA (International Energy Agency) – energy statistics and factors associated with industrial energy consumption.*
- » *IPCC (Intergovernmental Panel on Climate Change) – methodological references and default emission factors for industrial and energy processes, according to international guidelines.*
- » *Ecoinvent [3.12] – Material production databases: LCA (Life Cycle Assessment) database with detailed material production processes, widely used in environmental footprint models and in software such as SimaPro.*

FCC Construcción own data

Applied when no suitable international sources exist, in:

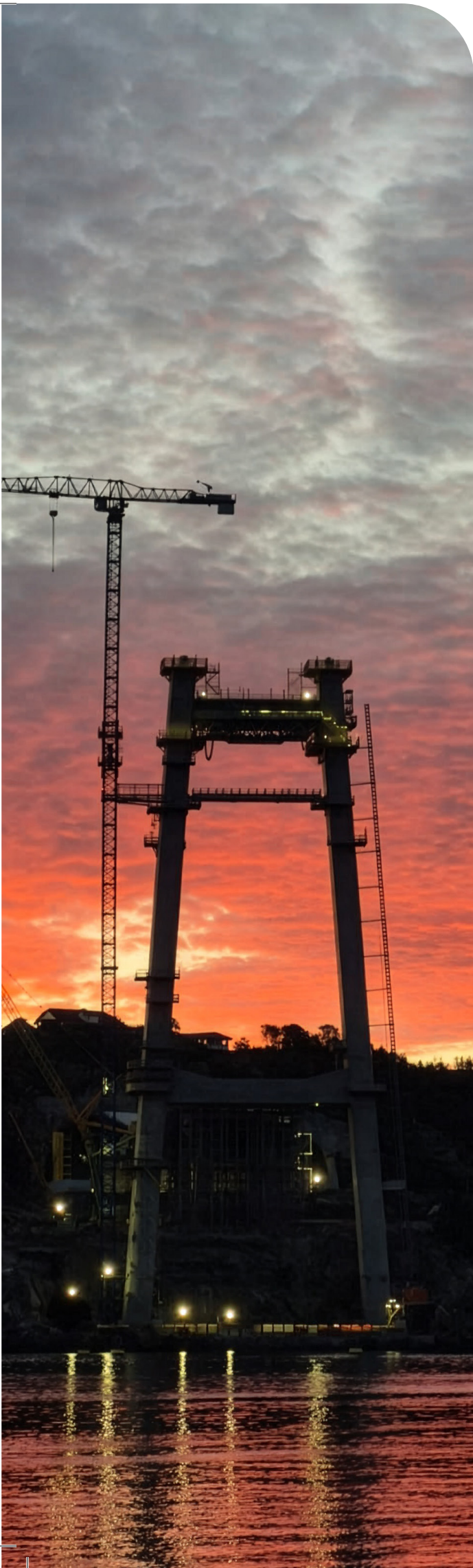
- » **Conversion coefficients to m²→t** for bricks, glass and insulation (studies on sites in the Community of Madrid).
- » **Waste and material density factors** (GBPC – FCC Basic Guide to Environmental Planning and Control).
- » **Factors associated with the machinery fleet** for subcontracted activities (concrete laying, prefabricated, earth moving, metal structure, etc.).

Report completion date: 20 March 2026

Yonge North Subway Extension (YNSE) – Canada



Declaration of conformity of AENOR



Sotra Bridge – Norway

AENOR

CLIENT:1994/0112/HCO/01

Introduction

FCC CONSTRUCCIÓN, S. A has commissioned AENOR Confia, S.A.U. (AENOR) to carry out a review limited of the Greenhouse Gas (GHG) Emissions Inventory for the 2025 of its activities included in the GHG report date 20 March 2026 ,which is part of this Statement.

AENOR is accredited by Mexican Accreditation Entity, with number GEI 004/14, in accordance with Standard ISO 14065:2020, for the verification of greenhouse gas emissions in accordance with the requirements established in Standard ISO 14064-3:2019.

GHG emissions inventory issued by the Organization: FCC CONSTRUCCIÓN, S. A, with registered office at AV Camino de Santiago, 40. 28050 - Madrid.

FCC CONSTRUCCIÓN, S. A was responsible for the GHG Statement, reports its emissions according to the Reference Standard ISO 14064-1:2018

Purpose

The purpose of verification is to provide stakeholders with a professional and independent judgement about the information and data contained in the GHG Report of FCC CONSTRUCCIÓN, S. A mentioned.

Scope of Verification

The scope of verification is set out for the activities and centres listed below:

Company	Activity	Location
FCC CONSTRUCCIÓN, S.A.	Construction projects and permanent facilities, including offices, warehouses, and equipment yards	Spain, Peru, Panama, Portugal, Bulgaria, Romania, Nicaragua, Costa Rica, El Salvador, Mexico, Colombia, Chile, the United Kingdom, Ireland, the Netherlands, Norway, the United States, Canada, Qatar, Saudi Arabia, and Australia

It has been considered as greenhouse gases CO₂, CH₄ y N₂O

AENOR

During the verification, the information was analyzed according to the control approach established by the Standard ISO 14064-1:2018. That is, the organisation reports all GHG emissions attributable to the operations under its control.

Direct and indirect activities and exclusions from verification

The activities subject to verification are divided into six categories (in accordance with the guidelines of ISO 14064-1:2018), which are:

Category 1: Direct GHG emissions and removals

- Associated with fuel consumption from stationary sources.
- Associated with fuel consumption from mobile sources.
- Other anthropogenic biogenic emissions.

Category 2: Indirect GHG emissions from imported energy

These include emissions from the generation of electricity purchased by FCC Construcción.

They are broken down into:

- Localized approach emissions.
- Market-based approach emissions.

Category 3: Indirect GHG emissions from transportation

- Emissions associated with the transportation of materials consumed upstream: This includes the transportation to the construction site of concrete, asphalt mix, soil, ballast, steel, non-ferrous metals, bricks, glass, cement, insulation, wood, and large prefabricated elements.
- Emissions associated with company personnel travel for business trips.
- Emissions associated with company personnel commuting to the workplace.

Category 4: Indirect GHG emissions from products used by the organization

- Emissions associated with the production of materials consumed: This includes emissions from the manufacture of concrete, asphalt mix, soil, ballast, steel, non-ferrous metals, bricks, glass, cement, insulation, wood, and large prefabricated components.
- Emissions associated with the execution of subcontracted construction units: This includes earthwork, the placement of concrete structures (distinguishing between building construction and civil engineering), the installation of roadways and steel structures, the laying of asphalt mix, and the installation of large precast elements.

AENOR

- Emissions associated with the transport and management of waste and surplus materials: This includes emissions associated with the transport of surplus soil, surplus clean debris, and the transport and disposal of MSW, mixed debris, and wood.
- Emissions associated with activities related to purchased energy
- Emissions associated with water consumption from the supply network
- Emisiones asociadas al transporte y gestión de residuos y materiales sobrantes: Se consideran las emisiones asociadas al transporte de tierras sobrantes, escombros limpios sobrantes, y, transporte y vertedero de RSU, escombros mezclados y madera.
- Emissions associated with energy-related activities
- Emissions associated with water consumption from the supply network

Category 5: Indirect GHG emissions associated with the use of the organization's products

The organization has not identified any emissions associated with this category

Category 6: Indirect GHG emissions from other sources

The organization has not identified any emissions associated with this category

Exclusions

FCC Construcción has decided to exclude fugitive emissions from the air conditioning units under its control from the emissions calculation, as these emissions account for a small proportion (<1%) of total emissions.

Mitigation activities

The mitigation emission or reduction activities carried out by the organization during the verification period are:

- for recycling waste instead of sending it to landfills
- for pH neutralization using CO₂
- for proper maintenance of on-site machinery
- for speed control of vehicles on-site
- for self-generated electricity from renewable sources for on-site consumption
- for the use of sustainable materials

Base Year

The organization has established 2025 as its base year.

AENOR

Materiality

For the verification, it was agreed to consider material discrepancies those omissions, distortions or errors that can be quantified and result in a difference greater than 5% with respect to the total declared emissions.

Criteria

The criteria and information that have been taken into account to carry out the verification have been:

- ISO 14064-1:2018: Specification with guidance at the organization level for quantification and reporting of greenhouse gas emissions and removals
- ISO 14064-3:2019: Specification with guidance for the validation and verification of greenhouse gas claims.
- Guidelines from the ENCORD (European Network of Construction Companies for Research and Development) sectoral framework, May 2012 edition
- Basic Guide to the Quantification of Greenhouse Gas Emissions, Version 12
- Guide to the Calculation of Greenhouse Gas Emissions in FCC Construction, Version 23

Finally, the Emissions Report prepared by the organization, dated 20/03/2026.

AENOR expressly disclaims any liability for decisions, investment or otherwise, based on this statement.

Conclusion

Based on the above, in accordance with the level of the limited assurance, there is no evidence to suggest that the GHG emissions information reported in the organization's report is not an accurate representation of the emissions from its activities.

Being the result of the Verification Statement: Satisfactory

Consistent with this Statement, the finally verified emissions and removals verified are listed below:

AENOR

TOTAL FCC CONSTRUCTION (according to the ENCORD classification)		t CO2e
Construction		
1. Fuels (construction sites)		34.074,57
2. Fuels (fixed facilities)		1.742,62
3. Fugitive and process emissions (excluded emissions)		0,00
4. Electricity (construction sites)		9.853,17
5. Electricity (fixed facilities)		517,44
6. Heat		0,00
7. Vehicle fuels		4.869,16
8. Company employee travel		321,06
9. Contractors		30.269,25
10. Waste		9.667,85
11. Materials		890.265,10
Total Emissions		981.580,22

REDUCTIONS (MITIGATION ACTIVITIES AND QUANTIFIED EMISSIONS)	
- DIRECT GHG EMISSIONS	
- Through proper maintenance of on-site machinery	1.534,41
- Through speed control of on-site vehicles	10,69
- INDIRECT GHG EMISSIONS	
- By recycling waste instead of sending it to landfills	132.529,4
- Through pH neutralization with CO2	1,8
- Through self-generated electricity from renewable sources	18,28
- Through the use of sustainable materials	59.227,67
Total Reduced Emissions (t CO2 e):	
	193.322,33



FCC
Construcción