

PORTUGAL

**Corporate
Presentation**

2025

| | |
|---------------------------------------|-----------|
| The company | 3 |
| | |
| Mission, Vision and Policies | 4 |
| | |
| Permits | 5 |
| | |
| Certifications | 6 |
| | |
| At the forefront of innovation | 7 |
| | |
| Sustainability | 9 |
| | |
| Warranty | 10 |
| | |
| Awards | 11 |
| | |
| Business Areas - References | 12 |
| | |

The company

Established in Portugal since 1989, **FCC Construcción** has an experience of 125 years and is among the leading construction companies in Europe and the world.

Its activity covers all areas of engineering and construction, in the execution of civil works (roads, railways and metro, airports, hydraulic works, tunnels, bridges, treatment plants, among others) and building (residential and non-residential).

FCC Group, a pioneer in the development of a profitable and sustainable business model, thus contributes to its commitment to local development and to the improvement of quality and the well-being of citizens.

- FCC Group: www.fcc.es
- FCC Construcción: www.fccco.es
- FCC Construcción Portugal: www.fccco.com/web/portugal

FCC Group

Construction

1967 Ramalho Rosa Foundation – Portuguese Partners

1989 Ramalho Rosa acquired by Grupo Dragados

1987 Foundation of Cobetar – Portuguese partners

1989 Cobetar acquired by FCC Group

1996 Merger between Ramalho Rosa and Cobetar - RRC

1998 RRC acquired by FCC Construcción

2023 FCC Construcción integrates Ramalho Rosa
Cobetar (RRC)

Mission, Vision and Policies

MISSION

Create value for society and our shareholders by providing the management and services necessary to design, build and operate infrastructure and services that contribute efficiently, sustainably and safely to people's well-being.

VISION

We want to be the international benchmark construction company in providing solutions for the well-being of citizens, the progress of society and sustainable development. A diversified and integrated company, committed to its employees and admired for its ability to create value and innovate to respond to new social needs.

VALUES

• Commitment • Efficiency • Excellence • Respect for the environment • Innovation and use of the most appropriate technology • Integrity • Teamwork • Caring for people

POLICIES

- Quality
- Environment
- Prevention of occupational risks
- Clients
- Workers
- Suppliers
- R+D+i
- Information security management
- Management of collaborative work relationships
- Digitisation
- Human rights



Permits

FCC Group

Construction

FCC Construcción in Portugal has the **Building Permit n.º 106575-PUB** that enables it to perform Civil Construction and Public works in the existing maximum classes.

Has offices located in:

Lisbon Praça de Alvalade, n.º 7 – 9.º Piso
1700-036 Lisboa

Oporto Passeio da Praia, n.º 431
4450-398 Matosinhos

Palmela **Central Industrial Warehouse**
Quinta da Torre, Lote 291, Quinta do Anjo
2950-635 Palmela

Certifications

FCC Group

Construction

Environmental Management System

EN ISO 14001



Quality Management System

EN ISO 9001



Verification of Greenhouse
Emissions

EN ISO 14064-1



Information Security Management
System

ISO/IEC 27001



Occupational Health and Safety Management System

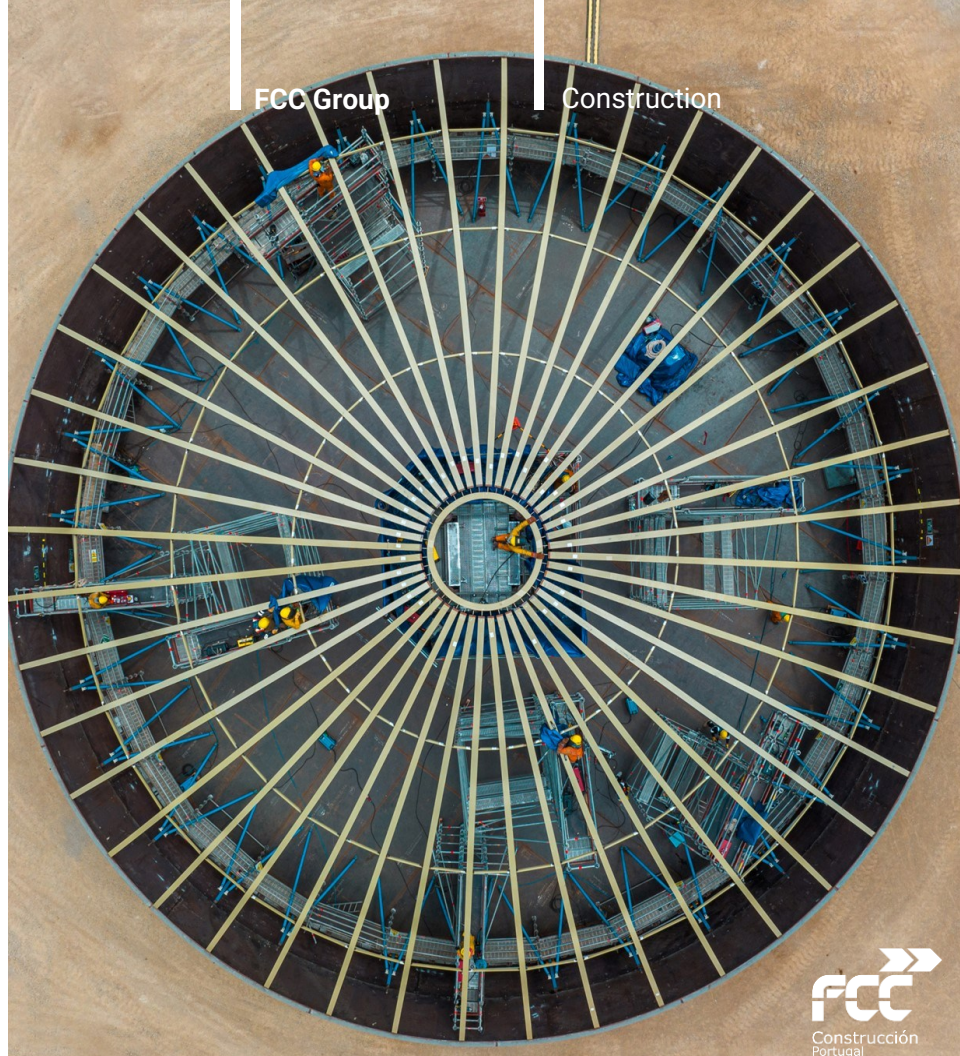
EN ISO 45001

The Group has other certified systems, such as BIM, RDİ, etc. For more information visit our website.

At the forefront of Innovation

The **Research, Development and Innovation (R+D+i)** activity aims to be an agent in the most important advances in the construction sector in terms of technological innovation in materials, equipment and processes, actively participating in initiatives oriented towards the main lines of action defined in the company.

- **Rail, urban and intercity infrastructure**, including energy and systems aspects.
- Integration of information and communication technologies in infrastructures and **smart buildings**
- Underground construction
- Marine construction
- Energy efficiency and **sustainability in construction**
- Smart transport and multimodality grids
- Occupational Risk Prevention
- **Sustainability and climate change prevention**



FCC Group

Construction

At the forefront of Innovation

The FCC Group is committed to launching projects where the **BIM - Building Information Modelling** methodology plays a significant role.

The implementation of BIM will allow improvements in current processes and increase the efficiency and security of the quality management process through optimization, automation and digitalization.

The main differentiating and significant aspects compared to current methods are the improvement of accessibility to on-site documentation, traceability of materials, geometric control and document control.

Improvements in the quality of information and the productivity of the management system will result in greater operational efficiency and increased customer confidence.

FCC Construcción has its **BIM system certified** by ISO 19650-1/2 and implemented in various types of construction sites around the world.

FCC Group

Construction



Sustainability

Sustainability Report

2023-2024

The **2050 Sustainability Strategy** is the central axis through which the company's commitment to achieving the Sustainable Development Goals defined in the United Nations 2030 Agenda is materialized.

FCC Construcción positions itself as a benchmark company in terms of sustainability in the sector, as a result of its ambition to pursue continuous improvement and promote innovation and sustainable development in all its projects.

As a pioneer in sustainability, in 2004, we joined the **United Nations Global Compact**.



Warranty

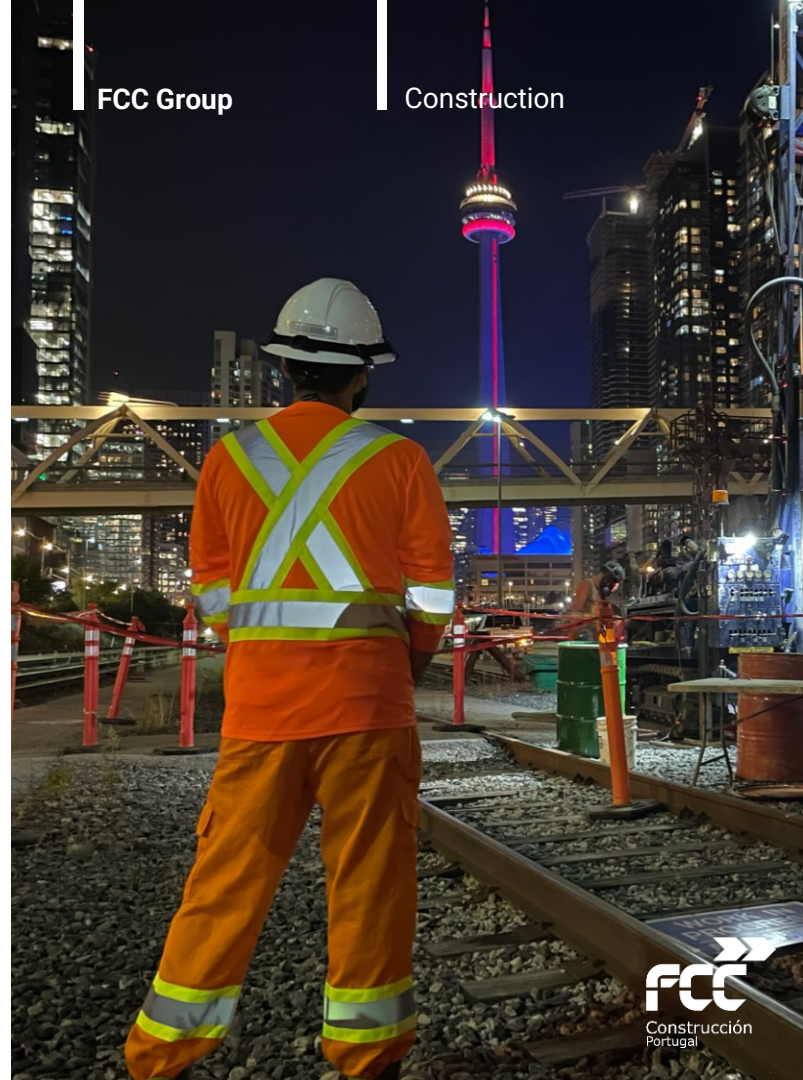
FCC Construcción has developed internal processes to respond to the Client's complaints, both during the execution phase of the work and during the warranty period of the same.

For each client, a representative will be appointed with the functions of the **Client's main Interlocutor**.

Points of collaboration and attention to customer suggestions are planned:

- Holding periodic meetings to foster areas of collaboration as well as receiving and discussing suggestions for improvement.
- Managing the internal processing of information obtained in meetings with customers.
- Communicating to customers the actions taken as a result of their suggestions and information provided.
- Handling and responding to complaints expressed during the execution and warranty phase.

The Group has had the **Business Collaborative Practices Management System** certified since 2019.



Awards

FCC Group

Construction

1994 Department of Geosciences of the Universidade de Aveiro – **ARCHITECTURE AWARD** (Arquiteto Souto Moura)

1999 Edifício Administrativo do Parque Expo, Lisboa - Honorable mention in the **VALMOR awards**

1999 Faculty of Veterinary Medicine, Universidade Técnica de Lisboa - Honorable mention in the **VALMOR awards**

2002 Edifício II do ISCTE, Universidade Nova de Lisboa - **VALMOR and Municipal Architecture Award** (Arquiteto Raul Hestnes Ferreira)

2020 Recognition of good practices “Circular economy in the construction sector” in the Social Responsibility Axis and Environment – Impact Reduction, by the **ASSOCIAÇÃO PORTUGUESA DE ÉTICA EMPRESARIAL**

2020 Modernization of the Beira Baixa line between Covilhã and Guarda – Nomination for **CONSTRUIR 2021 awards** in the category of BEST PUBLIC ENGINEERING PROJECT

2021 Recognition of the good practices "Professional and Personal Balance" in the Social Responsibility Axis and the category of Decent Work and Work-life balance, by the **ASSOCIAÇÃO PORTUGUESA DE ÉTICA EMPRESARIAL**

2022 Recognition of the good practices "Ethics and social responsibility as policies" in the Social Responsibility Axis and Market category, by the **ASSOCIAÇÃO PORTUGUESA DE ÉTICA EMPRESARIAL**

2024 It becomes one of the first Companies Certified by the Organizational Well-being and Happiness Index, by the joint organization of KEEPTALENT Portugal and **ACADEMIA DA FELICIDADE**



Business Areas

Building

Residential building

Non-residential building

Building rehabilitation

Civil works

Roads

Bridges

Tunnels

Railways and subway

Hydraulic

Maritime

Industrial & Environmental

Fuels and Energy

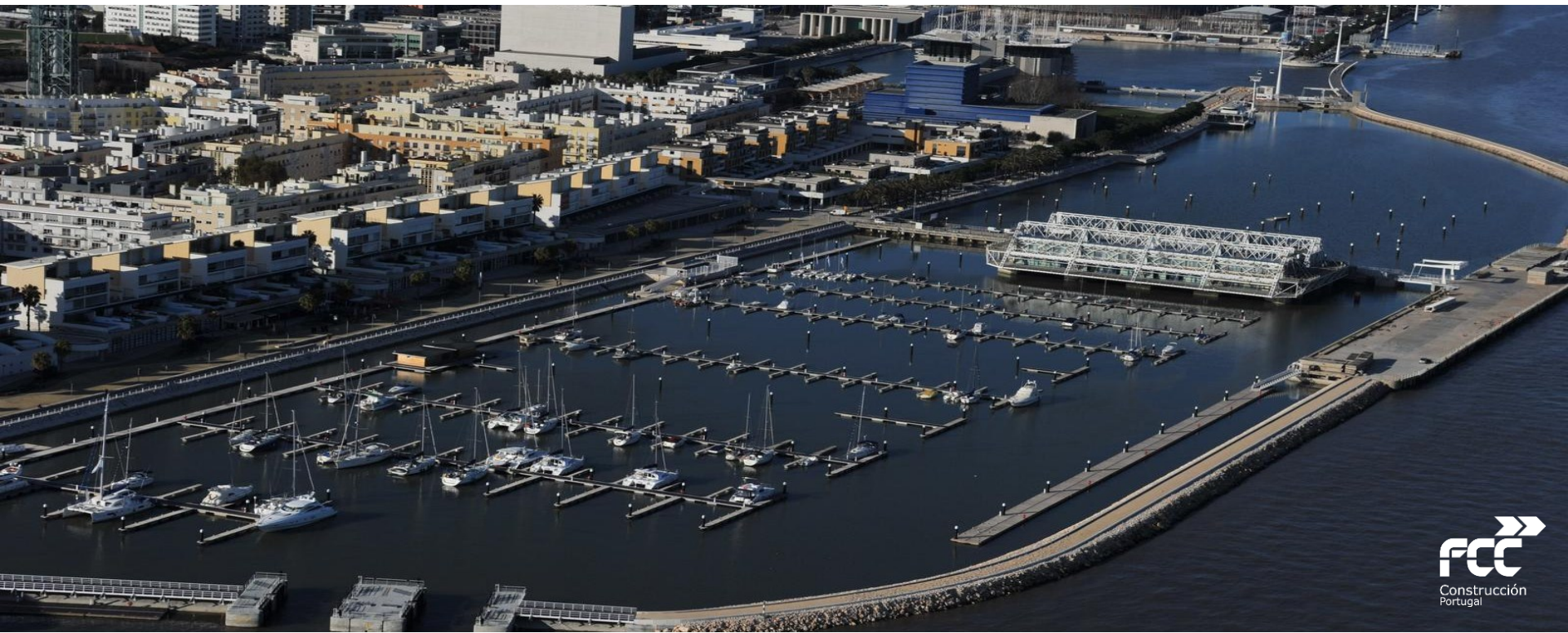
Landfills

Main references

FCC Group

Construction

Olivais Dock, Lisboa



Main references

FCC Group

Construction

ICSTE and ICS, Lisboa



Main references

FCC Group

Construction

Bessa roundabout, Porto



Main references

FCC Group

Construction

El Corte Inglés, Vila Nova de Gaia



Main references

FCC Group

Construction

Litoralmar, Portimão



Main references

FCC Group

Construction

Expansion of the Galp Refinery, Sines

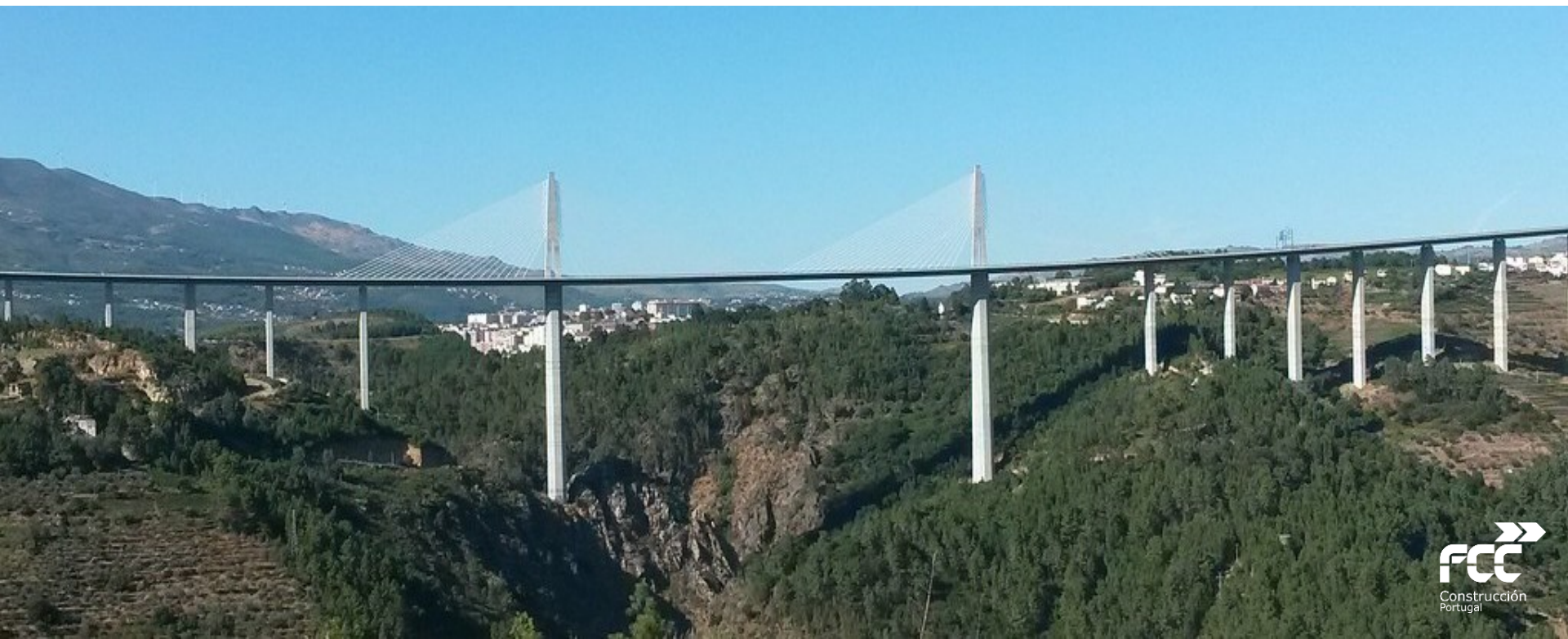


Main references

FCC Group

Construction

Corgo Viaduct, Vila Real



Main references

Hydraulic Circuit Amoreira – Caliços, Setúbal



FCC Group

Construction

Main references

FCC Group

Construction

Águas Santas Tunnel, Maia



Main references

FCC Group

Construction

Carlos Lopes Pavilion, Lisboa



Main references

FCC Group

Construction

Gouvães Dam, Ribeira de Pena



Main references

FCC Group

Construction

Rehabilitation of Luis Bivar and Sousa
Martin buildings, Lisboa



Main references

FCC Group

Construction

Meleças – Torres Vedras Railway line



Main references

FCC Group

Construction

Santa Luzia School, Elvas



Main references

FCC Group

Construction

La Reserve, Carvalhal



Main references

Torres Vedras – Caldas da Rainha Railway line



Main references

FCC Group

Construction

Pinhão – Tua Railway line



Main references

Metro Mondego's Materials Park and
Workshops, Coimbra



FCC Group

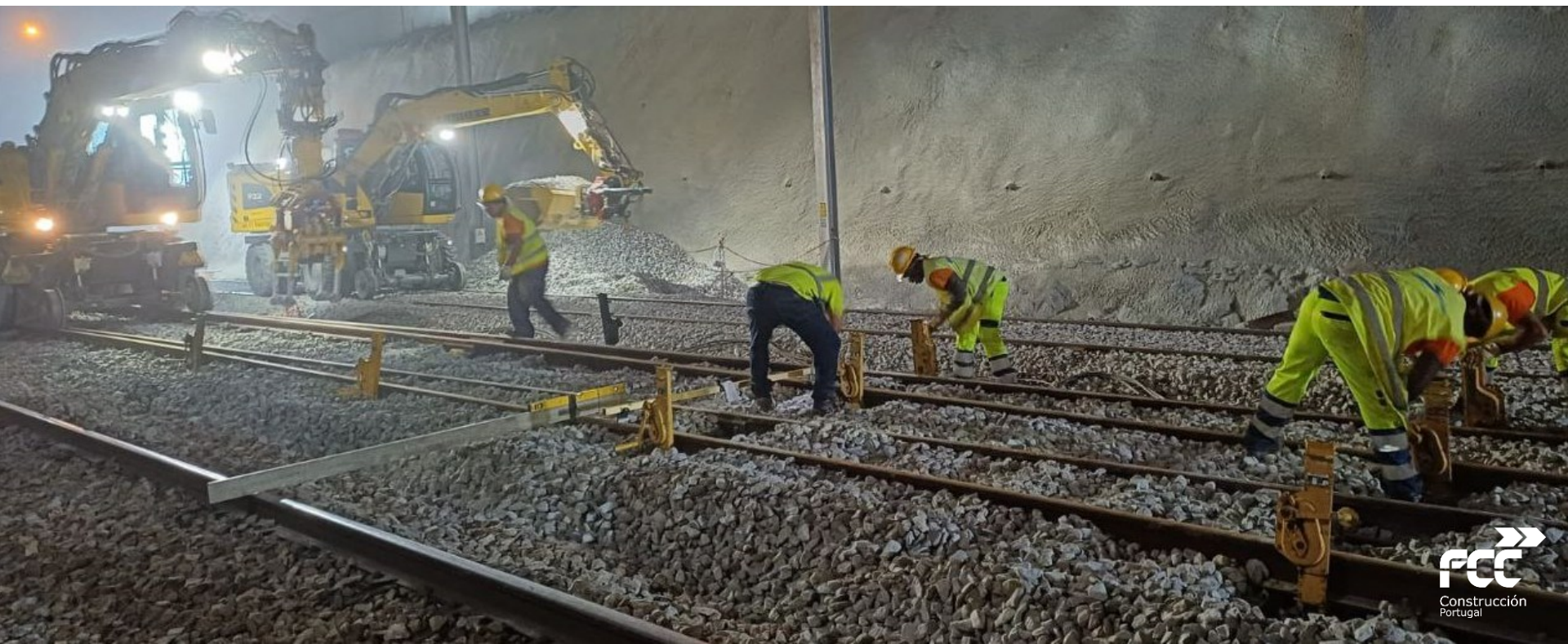
Construction

Main references

FCC Group

Construction

Coimbra B railway station and Mondego Mobility System, Coimbra



Main references

eguengos de Monsaraz hydraulic circ



FCC Group

Construction

Main references

FCC Group

Construction

Ruby Line (Casa da Musica to Santo Ovídio) and Ferreirinha Bridge of Metro do Porto





www.fccco.com/web/portugal

geral.pt@fccco.com

Contacts

Lisbon

Headquarters

Praça de Alvalade, n.º 7 – 9.º Piso

1700-036 Lisboa

Phone: +351 214 147 500

Oporto

Passeio da Praia, n.º 431

4450-398 Matosinhos

Palmela

Central Industrial Warehouse

Quinta da Torre, Lote 291, Quinta do Anjo

2950-635 Palmela

Studies and Proposals

Helder Pombo

Mobile: +351 918 883 515

helder.pombo@fccco.com